



ENTEGRA
COACH®

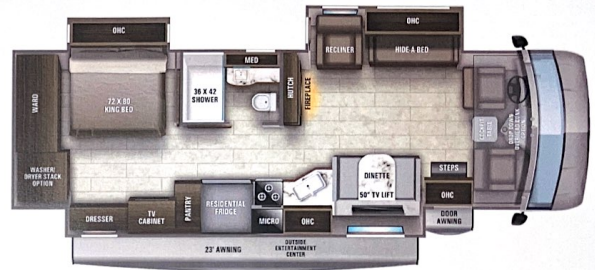
Emblem



Serial #: 1JSMEABU8M1DH8092
Model: 36H EMBLEM MHA
VIN#: 1F66F5DN5L0A13460
Model Year: 2021 Dealer Name: NATIONAL INDOOR RV CENTERS
1350 HURRICANE SHOALS ROAD
LAWRENCEVILLE, GA 30043
USA

Manufacturer's Suggested Retail Price \$208,067.00

TOTAL AMOUNT DOES NOT INCLUDE STATE AND LOCAL TAXES OR LICENSE FEES. THE PRICE SHOWN ABOVE MAY OR MAY NOT BE REPRESENTATIVE OF THE ACTUAL SELLING PRICE OF SIMILAR RECREATIONAL VEHICLES IN YOUR AREA.



Standard Equipment

THE FOLLOWING ITEMS ARE STANDARD ON THIS MODEL AT NO EXTRA CHARGE

- Exterior
 - For® F53 chassis
 - 7.3L V8 300 HP engine with 468 ft. lb. torque
 - 6-speed automatic TorqShift® transmission with overdrive and tow haul mode
 - 210-amp alternator
 - Rated highway tires -26.5R22.5
 - Front and rear disc, 4-wheel anti-lock brakes
 - 5,000 lb. rear hitch receiver with dual connector and 7-pin plug
 - 12V chassis battery
 - 80 gal. fuel tank
 - 120 in panoramic windshield
 - TuffBelt™ vacuum-bond laminated roof, floor and sidewalls
 - Block-foam insulation (R-24 max roof, R-9 max floor, R-9 max walls)
 - One-piece, seamless, crowned fiberglass roof
 - Premium Sikens full body paint
 - Third brake light
 - Entrance door with industry's largest travel view window
 - One-piece, seamless, fiberglass front and rear caps
 - Electric powered entrance step
 - Lockable pass-through storage compartments with slam latches
 - 16V AGM (220Ah) house batteries on slideout tray
 - 12V demand water pump
 - Thetford® Sani-Con Turbo Macerator system
 - 24.5 gal. propane tank (6.3 lb.)
 - LP quick-connect hookup
 - Exterior utility center
 - Winterization drain system
 - Outside shower
 - Black tank flush
 - Solar Prep
 - Porch light
 - Roof ladder

- Interior
 - Energy power and swivel driver and passenger seats
 - Soft-touch, vinyl wrapped automotive dash
 - A/C and cruise control
 - Tilt steering wheel
 - Auxiliary start
 - Firefly Multiplex system
 - 84 in. interior ceiling height with padded vinyl ceiling
 - Hardwood cabinet doors and drawers
 - Power front privacy shade with manual side privacy shades
 - High-intensity, recessed LED ceiling lights
 - Ball-bearing drawer guides
 - Furrion® stainless, recessed, gas cooktop with cast iron grill
 - Convection microwave oven
 - Powered roof vent in kitchen with wall switch
 - Furrion® electric fireplace
 - 21 cu ft. residential refrigerator with ice and water in door
 - LED 18 hardwood fascia
 - LED 18 stainless steel bathroom sink
 - Water filtration system
 - Entegra-exclusive easy operation legless dinette table
 - 2-point lap safety belts in all designated seating locations
 - Blu-Ray™ player in living area
 - 35,000 BTU auto-ignition ducted furnace
 - Prep for satellite dish
 - Cable TV hookup with RG-6 coax and video selector switch
 - Digital antenna with signal booster
 - One-piece, fiberglass shower with glass door, skylight and light
 - Porcelain toilet with foot flush
 - Powered roof vent in bathroom with wall switch
 - Walk-around King-sized bed with bedspread and nightstands
 - Under-bed storage (select models)
 - Large windows
 - LED TV in bedroom
 - Bunks with industry-exclusive 300 lb. capacity each (26T)
 - Decorative kitchen backplash
 - Smoke alarm
 - Carbon monoxide detector

Optional Equipment

OPTIONAL EQUIPMENT INSTALLED ON THIS VEHICLE BY MANUFACTURER

- Base price 191,168.00
- Richmond n/c
- Juniper Paint n/c
- USA Standards n/c
- Customer Value Package 11,250.00
- Residential Refrigerator n/c
- Cooktop with Oven 713.00
- No Washer/Dryer n/c
- Reclining Sofa 120* 1,943.00
- Front Bunk Overhead 2,993.00

UNIT TOTAL 208,067.00

DEALER INSTALLED OPTIONS

DIMENSIONS

Exterior height:.....154.00*
Exterior width:.....101.00*

CAPACITIES

Fresh water tank (gals.):.....72.00
Gray water tank (gals.):.....90.00
Black water/toilet tank (gals.):.....40.00
Propane (lbs.):.....83
Propane (gals.):.....19
Water heater (gals.):.....10.00

TIRES

Tire size (front):.....255/80R22.5G
Tire size (mid):.....
Tire size (rear):.....255/80R22.5G

Some dimensions may be rounded and may vary from the actual dimensions
Weights may be estimated calculations and may vary from the actual weight
- refer to the vehicle weight labels for actual weights***
Floorplans, features and specifications are subject to change without notice.