



Accolade XL



Serial #: 1JSNECBU6S1LM8121
 Model: 37M ACCOLADE XL MHC
 VIN#: 4UZADVFC3SCWH0481
 Model Year: 2025 Dealer Name: National Indoor RV Centers
 1000 Aubrey Dr.
 Lebanon, TN 37090
 USA

Manufacturer's Suggested Retail Price

\$408,833.00

TOTAL AMOUNT DOES NOT INCLUDE STATE AND LOCAL TAXES OR LICENSE FEES. THE PRICE SHOWN ABOVE MAY OR MAY NOT BE REPRESENTATIVE OF THE ACTUAL SELLING PRICE OF SIMILAR RECREATIONAL VEHICLES IN YOUR AREA.

Standard Equipment

THE FOLLOWING ITEMS ARE STANDARD ON THIS MODEL

STANDARD EXTERIOR EQUIPMENT

- Freightliner® S2RV front engine diesel Super-C cab chassis
- Cummins® ISB 6.7L 360 HP diesel engine with 800 ft.-lb. torque
- Allison® 3000 MH automatic transmission
- Variable geometry engine exhaust brake
- 185 amp alternator
- Michelin® tires- 275/80R 22.5 14 ply
- 12,000 lb. rear hitch receiver
- 7-pin plug
- Dual 12V chassis batteries - 1900 CCA
- 100 gal. fuel tank
- 10 gal. DEF tank
- Onan® 8,000W diesel generator with auto-gen start
- (4) 6V AGM (220Ah) house batteries on slideout tray
- 200W solar panel with dual controller
- Dual 15,000 BTU A/C unit with heat pump on main A/C
- 5,000 BTU thermostat-controlled electric fireplace
- Thetford® Sani-Con Turbo macerator system
- Exterior utility center
- Winterization drain system
- Black tank flush
- Outside shower
- 12V demand water pump
- Water filtration system
- Power windows and door locks
- Tilt and telescoping leather-wrapped steering wheel
- Tuff-Shell™ vacuum-bond laminated roof, floor and sidewalls for superior insulation and sound absorption
- One-piece, seamless, crowned fiberglass roof
- Bead-foam insulation (R-24 max roof, R-9 max floor, R-8 max walls)
- One-piece, seamless, fiberglass front and rear caps
- Automotive-bonded panoramic window in front cap with power shade
- Premium Sikkens full-body paint
- Automatic hydraulic leveling jacks
- Alcoa® aluminum rims
- Exterior entertainment center with outside speakers, LED TV mounted on swivel bracket and AM/FM radio
- Winegard® In-motion satellite dish
- Deluxe heated, remote-controlled, side-view mirrors
- Entrance door with industry's largest travel-view window
- Electric-powered entrance step
- Slideout cover awnings
- Chrome exterior baggage door handles and locks
- Carpeted, full pass-through storage compartments with lockable slam latch doors

STANDARD INTERIOR EQUIPMENT

- 6-way power driver and passenger seats
 - Auxiliary start switch
 - Privacy curtains for cab area
 - Color-coordinated carpeted floor mat
 - Custom-molded ABS surround in cab-over area
 - Overhead bunk with 750 lb. capacity and safety net with 300 lb. capacity
 - Collapsible bunk ladder
 - Firefly Multiplex system offers control of important coach features via LED touchscreen or mobile app
 - High-intensity recessed LED ceiling lights
 - Raised-panel hardwood cabinetry and stiles throughout
 - Deluxe hidden cabinet hinges
 - Matte-finish woodgrain porcelain floor tile with heated floor mat
 - Day/night roller shades in living area
 - Entegra-exclusive, easy-operation legless dinette table
 - Car seat tethers on forward-facing dinette seats
 - 2-point lap safety belts in all designated seating locations
 - 50 in. LED TV in living area (40 in. on 37K)
 - Samsung® sound bar
 - Cable TV hookup with RG-6 coax and video selector switch
 - Wood-framed kitchen window with spice cabinets
 - 2-burner induction cooktop with LED display
 - Solid-surface kitchen countertop with large integrated stainless steel sink with sink covers
 - Walk-around, king-sized bed with bedspread and nightstands
 - 32 in. Smart LED TV in bedroom
 - Large wardrobes
 - Bunks with industry-exclusive 300 lb. capacity each (37L)
 - One-piece, fiberglass shower with glass door, skylight and light
 - Porcelain toilet with foot flush
 - Solid-surface bathroom sink
 - Powered roof vent in bathroom with wall switch
 - Smoke alarm
 - Carbon monoxide detector
- #### CUSTOMER VALUE PACKAGE
- E-Z Drive™ Premier: Computer-balanced driveshaft, rear air suspension, heavy-duty rear stabilizer bar, full air brakes, SACHS shocks
 - Dual-pane, tinted, safety-glass windows
 - Roof-mounted Girard® patio awning with LED lights
 - 2,000W pure sine wave inverter
 - Power cord reel with 50 amp service
 - Aqua-Hot® 250D hydronic water and heating system with 5 in. LED screen
 - 9 in. Sony® infotainment center with Apple CarPlay® and Android Auto™
 - Backup and side-view cameras
 - Stainless steel residential refrigerator
 - Flush-mounted convection microwave

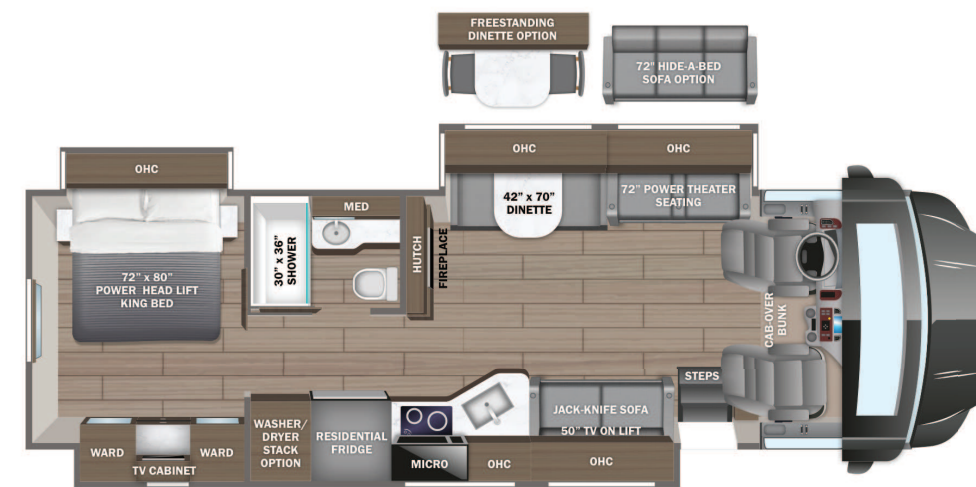
Optional Equipment

OPTIONAL EQUIPMENT INSTALLED ON THIS VEHICLE BY MANUFACTURER

Base price	395,100.00
GLACIER DECOR	n/c
ALMOND CABINERY	30.00
EXCLUDE DOVE WHITE FRONT OVERHEAD ACCENT WOOD	n/c
TACOMA SHADOW TILE	30.00
CABERNET RED PAINT	30.00
USA STANDARDS	n/c
25 FR S2RV 31000 279"	n/c
360 SA15	n/c
CUSTOMER VALUE PACKAGE	11,250.00
WASHER/DRYER STACKABLE	2,393.00
IN MOTION DISH SATELLITE SYSTEM	n/c
BOOTH DINETTE	n/c
POWER THEATER SEATING	n/c
SOFA	n/c

UNIT TOTAL **408,833.00**

DEALER INSTALLED OPTIONS



DIMENSIONS

Exterior height:.....160.00"
 Exterior width:.....101.00"

CAPACITIES

Fresh water tank (gals.):...72.00
 Gray water tank (gals.):...80.00
 Black water/toilet tank (gals.):.....55.00
 Propane (lbs.):.....0
 Propane (gals.):.....0
 Water heater (gals.):.....0.00

TIRES

Tire size (front):.....275/80R22.5G
 Tire size (mid):.....
 Tire size (rear):.....275/80R22.5G

Some dimensions may be rounded and may vary from the actual dimensions
 Weights may be estimated calculations and may vary from the actual weight - refer to the vehicle weight labels for actual weights
 Floorplans, features and specifications are subject to change without notice.