



Alante



Serial #: 1UJMJABN8S1AU4065
 Model: 27A ALANTE MHA
 VIN#: 1F65F5DNXR0A01485
 Model Year: 2025 Dealer Name: NATIONAL INDOOR RV CENTERS
 11280 N SOLAR CANYON WAY
 SURPRISE, AZ 85379
 USA

Standard Equipment

THE FOLLOWING ITEMS ARE STANDARD ON THIS MODEL AT NO EXTRA CHARGE

STANDARD EXTERIOR EQUIPMENT

- Ford® F53 chassis
- GVWR- 18,000 lb
- GCWR- 23,000 lb
- 7.3L V-8 335 HP engine with 468 ft.-lb. torque
- 6-speed automatic TorqShift® transmission with overdrive and low haul mode
- 210-amp alternator
- Catalytic converter theft deterrent
- G-rated highway tires-245/70R19.5
- Front and rear disc, 4-wheel anti-lock brakes
- 5,000 lb rear hitch receiver with dual connector and 7-pin plug
- 12V chassis battery
- 80 gal fuel tank
- 120 in. panoramic windshield
- Stronghold® VBL™ roof, floor and sidewalls
- Dead-load insulation (R-24 max roof, R-9 max floor, R-8 max walls)
- One-piece, seamless, fiberglass front cap
- Fiberglass exterior walls with vinyl graphics
- Automatic hydraulic leveling jacks
- Frameless windows
- Entrance door with industry's largest travel-view window
- Electric-powered entrance steps
- Lockable, pass-through storage compartments with metal slam latches
- LED headlights
- Third brake light
- 4 in. bumper tube with sewer hose storage
- Roof ladder
- Prep for satellite dish
- Cable TV hookup with RG-6 coax and video selector switch
- Winegard 2.0 Wi-Fi/4G antenna
- 4,000W generator
- 200W solar panel with dual controller and second house battery
- (2) 12V house batteries
- Transfer switch with reverse polarity protection
- 30-amp electrical service
- Detachable power cord
- 16.5 gal. propane tank (56 lb.)
- LP quick-connect hookup
- Heated holding tanks (12V pads)
- Exterior utility center
- Winterization drain system
- Black tank flush
- Outside shower
- 12V demand water pump
- Water filtration system

CUSTOMER VALUE PACKAGE

- JHco® Computer-balanced driveshaft, Bilstein® steering stabilizer, jounce bumpers, heavy-duty front and rear stabilizer bars, SACHS shocks
- One-piece, seamless, crowned fiberglass roof
- Exterior entertainment center with outside speakers and LED HD Smart TV mounted on swivel bracket
- Electric patio awning with LED lights
- Sideout awning(s)
- 1,000W inverter
- Sony® infotainment center with Apple® CarPlay and Android Auto™
- Backup and side-view cameras
- Removable driver/passenger cockpit table
- LED HD Smart TV in living area
- Blackout night roller shades

Optional Equipment

OPTIONAL EQUIPMENT INSTALLED ON THIS VEHICLE BY MANUFACTURER

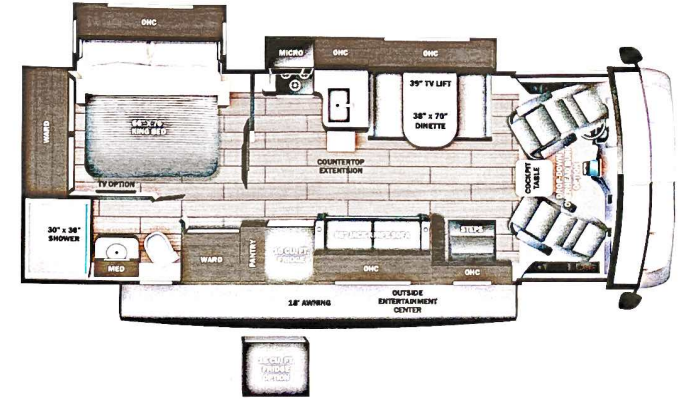
| | |
|-----------------------------|------------|
| Base price | 176,918.00 |
| ASHBROOK | n/c |
| USA STANDARDS | n/c |
| CUSTOMER VALUE PACKAGE | 9,923.00 |
| BEDROOM TV | 383.00 |
| 10 CU. FT. 12V REFRIGERATOR | n/c |
| STANDARD HOUSE BATTERY | n/c |
| FRONT OVERHEAD BUNK | 3,293.00 |

UNIT TOTAL 190,517.00

DEALER INSTALLED OPTIONS

Manufacturer's Suggested Retail Price \$190,517.00

TOTAL AMOUNT DOES NOT INCLUDE STATE AND LOCAL TAXES OR LICENSE FEES. THE PRICE SHOWN ABOVE MAY OR MAY NOT BE REPRESENTATIVE OF THE ACTUAL SELLING PRICE OF SIMILAR RECREATIONAL VEHICLES IN YOUR AREA.



DIMENSIONS

Exterior height:.....149.00"
 Exterior width:.....101.00"

CAPACITIES

Fresh water tank (gals.):...72.00
 Gray water tank (gals.):...50.00
 Black water/toilet tank (gals.):...49.00
 Propane (lbs.):...56
 Propane (gals.):...13
 Water heater (gals.):...6.00

TIRES

Tire size (front):.....245/70R19.5G
 Tire size (mid):.....
 Tire size (rear):.....245/70R19.5G



Some dimensions may be rounded and may vary from the actual dimensions
 Weights may be estimated calculations and may vary from the actual weight - refer to the vehicle weight labels for actual weights
 Floorplans, features and specifications are subject to change without notice.