



**ENTEGR A**  
COACH®

**Anthem**



Serial #: 1JSMEACV8N14B8077  
Model: 44B ANTHEM MHA  
VIN#: 4VZAU1D91NC091551  
Model Year: 2022 Dealer Name: NATIONAL INDOOR RV CENTERS  
1350 HURRICANE SHOALS ROAD  
LAWRENCEVILLE, GA 30043  
USA

**Standard Equipment**

THE FOLLOWING ITEMS ARE STANDARD ON THIS MODEL AT NO EXTRA CHARGE

- EXTERIOR**
- Spania® R2 raised-rail chassis
  - Cummins® L9 turbocharged 450 HP engine with 1,250 lb. ft. torque at 1,400 RPM
  - Allison® 3,000 MH 6-speed transmission
  - Side-mounted, parallel airflow radiator
  - Rayco® Grunnung® front axle with independent front suspension - 20,000 lb. rating
  - Monitor rear axle - 20,000 lb. rating
  - Tag axle with air dump - 12,000 lb. rating
  - Booster® shocks - 60mm front axle & 40mm rear/air bag axles
  - Equalizer™ hydraulic automatic coach leveling
  - Valid Truline air leveling system with auxiliary air compressor
  - Road 4" arched aluminum trusses filled with batt insulation and reflective Flexfoam® topped with 3/8" plywood decking then one-piece fiberglass
  - Sidewalls: 2-1/2" exterior walls with Alumina-Tru™ welded tubular aluminum studs on 16" centers or less, filled with batt and Flexfoam® insulation, then covered with high-gloss gelcoat fiberglass (R-10)
  - Floors: 2" x 4" wood trusses on 16" centers or less filled with batt and Flexfoam® insulation then topped with 3/4" 7-ply plywood decking (R-33)
  - 4 Bridge™ tracing welded into chassis frame
  - Aqua Heat® heated basement storage
  - Entegra exclusive Hela-Torque flush-mounted 12V airduct system
  - Onan® 12,500-watt diesel generator, with automatic start, on powered slide-out tray
  - 3,000-watt pure sine wave inverter
  - (4) 1.6 AGM batteries (6V/350 amp hrs. ea.)
  - 50-amp power cord on electric powered reel
  - Smart automatic transfer switch with surge protection
  - (3) 15,000 BTU A/C units with heat pumps and condensation drain system
  - Aqua-Heat® 450D hydronic water and heating system with in-floor heat throughout and engine exhaust
  - San-Con® Macerator holding tank dump system with manual gate valves, manual backup and metal door
  - Tetank™ ultrasonic tank monitoring system displayed on Vega touch screen
  - Premier Bus Armor 5" stainless-steel trim
  - Power rear engine door with manual override
  - Dual roof-mounted Grand® Vision dual-pitched patio awnings with LED lights
  - Grand® power entrance door awning with LED lights
  - Grand® Ultra sidelux awnings
  - Grand® Ultra power window awnings
  - Frameless, dual-pane, tinted, safety glass windows
  - Lit grab handle with footbell and keypad system for keyless entry
  - 42" Samsung® QLED 4K UHD Smart TV with tilt, swivel, and extend adjustment
  - JBL radio and speakers with USB port and receptacle
  - Chrome, heated, remote-control, side-view mirrors with integrated cameras and blind-spot indicators
  - Diamond Shield™ front protective film mask
  - Winogard® TRAVLER satellite dish DIRECTV® - standard with USA option
  - Winogard® Rayzar® Automatic powered TV antenna
  - Winogard® WiFi extender with 40 LTE
  - Heated exterior utility center with 5" LED Firefly® tank monitoring panel
  - Power airduct basement storage tray
  - 2.8-cu. ft. exterior Dometic® refrigerator/freezer on slide-out tray

- INTERIOR**
- Valid 15" digital dash with dual core graphics processor, on-board diagnostics, selector knob and ability to display traditional instrument cluster, 360° camera system or GPS navigation
  - Blind spot monitoring system displayed on digital dash screen
  - Xite™ 360° HD digital camera system
  - Xite™ X300c infotainment system with dual 9" touchscreens, iGO navigation, Bluetooth®, Sirius XM™ and AM/FM tuner, integrated camera control, house mode whole-coach audio distribution and integrated Vega Touch coach control
  - Tire pressure monitoring system (TPMS) with temperature monitoring
  - E-Z Steer™ adjustable power steering assist
  - Steering wheel with integrated controls for cruise, wipers, radio and Bluetooth® phone functionality
  - Power tilt and telescoping steering column
  - JBL® premium audio 11 speaker sound system with amplifier, speakers and DVC subwoofer
  - Ultra Vision® one-piece wrap-around heated windshield
  - 32" Samsung® QLED 4K UHD Smart TV in front overhead
  - Valid® heated leather driver and passenger seats with powered 6-way adjustment, lumbar, recline and footrest functions
  - Powered flush stepwell cover
  - Powered adjustable brake and accelerator pedals
  - Powered front sun visors and privacy shades
  - (2) dual USB ports and (2) 12V sockets for charging
  - LED lit fireplace with 5,000 BTU heating element (44B, 44Z)
  - Freely multiplex system with 10" Vega Touch touchscreen for complete integration of coach controls, with remote monitoring and control (mobile apps available)
  - 50" Samsung® QLED 4K UHD Smart TV
  - Boos® sound bar with subwoofer and universal remote control
  - Sony® Blu-ray™ player
  - Premium leather Vibe® furniture
  - Heads and porcelain tiled floors
  - LED interior lighting
  - Powered solar day and blackout night shades
  - Central vacuum system
  - Aire-Secure™ travel locks for all pocket doors
  - Whisper® stainless-steel residential refrigerator with ice maker and water dispenser
  - Induction cooktop with matching wood cover
  - Whisper® 1.9 cu. ft. convection microwave oven
  - Fuhr® & Paykel dishwasher
  - Porcelain tile back splash
  - Solid-surface countertops with Blanco single-bowl granite sink and dimmable LED accent lighting
  - Maxair® power vent exhaust fan with intake and touch screen control
  - Large, deep drawer for waste basket with easy access trash chute (trash chute not available in 44F, 44R)
  - Select Comfort® Super Numpod® King-size mattress
  - 32" Samsung® QLED 4K UHD Smart TV
  - Boos® sound bar with universal remote control
  - Sony® Blu-ray™ player
  - Ceiling fan
  - Nightstands with solid-surface tops
  - Large cedar-lined wardrobe
  - Solid-surface countertops with integrated glass sink and dimmable LED accent lighting
  - Porcelain tile shower with daylight and clear glass shower door
  - Hardwood shower seat (NIA 44F)
  - Fixed shower head and separate hand-held spray wand
  - Aqua View SHOWERSEER™ water saving system
  - Whisper® macerator toilet in main bath (NIA 44Z)
  - Whisper® stacked washer and dryer
  - Storage safe

**Optional Equipment**

OPTIONAL EQUIPMENT INSTALLED ON THIS VEHICLE BY MANUFACTURER

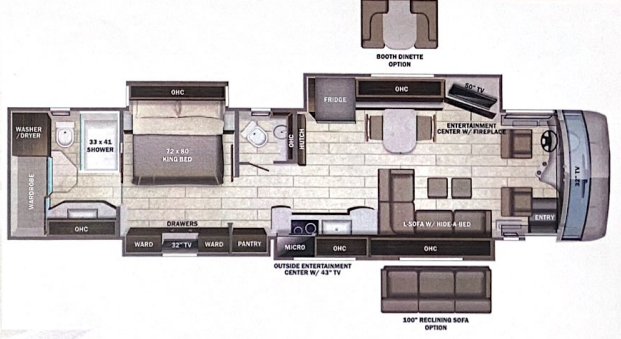
Base price	637,605.00
Desert	n/c
Almond Cabinetry	30.00
Exclude Linen Front	n/c
Overhead Accent Wood	n/c
Tapestry Bianco Tile	n/c
Rally Red Paint	30.00
USA Standards	n/c
22 SP 52000 320" 450 TAG	n/c
AXLE 2021 EMISSIONS NA08	n/c
Dishwasher Drawer	n/c
Fireplace	n/c
Trailer Direct TV	n/c
Satellite Dish	n/c
No Solar Panels	n/c
Free Standing Table with 4 Chairs	n/c
Reclining Power Sofa 100"	743.00

UNIT TOTAL **638,408.00**

DEALER INSTALLED OPTIONS

**Manufacturer's Suggested Retail Price \$638,408.00**

TOTAL AMOUNT DOES NOT INCLUDE STATE AND LOCAL TAXES OR LICENSE FEES. THE PRICE SHOWN ABOVE MAY OR MAY NOT BE REPRESENTATIVE OF THE ACTUAL SELLING PRICE OF SIMILAR RECREATIONAL VEHICLES IN YOUR AREA.



**DIMENSIONS**

Exterior height:.....152.00"  
Exterior width:.....101.00"

**CAPACITIES**

Fresh water tank (gals.):...100.00  
Gray water tank (gals.):...62.00  
Black water/toilet tank (gals.):...41.00  
Propane (lbs.):.....0  
Propane (gals.):.....0  
Water heater (gals.):.....0.00

**TIRES**

Tire size (front):.....365/70R22.5  
Tire size (mid):.....315/80R22.5  
Tire size (rear):.....315/80R22.5

\*\*\*Some dimensions may be rounded and may vary from the actual dimensions\*\*\*  
\*\*\*Weights may be estimated calculations and may vary from the actual weight\*\*\*  
- refer to the vehicle weight labels for actual weights\*\*\*  
Floorplans, features and specifications are subject to change without notice.