



ENTEGRA

COACH®

Cornerstone

Serial #: 1JSM6ACV9R16D8088
 Model: 45D CORNERSTONE MHA
 VIN#: 4VZVU1R12RC095246
 Model Year: 2024 Dealer Name: National Indoor RV Centers
 1000 Aubrey Dr.
 Lebanon, TN 37090
 USA



Manufacturer's Suggested Retail Price \$931,621.00

TOTAL AMOUNT DOES NOT INCLUDE STATE AND LOCAL TAXES OR LICENSE FEES. THE PRICE SHOWN ABOVE MAY OR MAY NOT BE REPRESENTATIVE OF THE ACTUAL SELLING PRICE OF SIMILAR RECREATIONAL VEHICLES IN YOUR AREA.

Standard Equipment

THE FOLLOWING ITEMS ARE STANDARD ON THIS MODEL AT NO EXTRA CHARGE

- STANDARD EXTERIOR EQUIPMENT**
- Standard® K3 recessed chassis
 - Cummins® 15 liter X15 turbocharged 605 HP engine with 1,950 lb. ft. torque at 1,150 RPM
 - Three-stage engine brake
 - Collision avoidance system with collision warning, adaptive cruise control and electronic stability control
 - Suspension: front air-ride and independent front suspension; rear air-ride and independent rear suspension
 - Custom-tuned Kom® shocks - 20,000 lb rating
 - Dax® rear axle - 20,000 lb. rating
 - One-piece aluminum passive steering axle with 20,000 lb. rating
 - All-wheel ABS disc brakes
 - Michelin® 365/70R 22.5 in. tires (front) and 315/60R 22.5 in. tires (rear)
 - All-terrain monitoring system (TPMS) with temperature monitoring
 - Automatic traction control
 - Equizer™ hydraulic automatic coach leveling compressor
 - 20,000 lb. hitch with 7-pin plug
 - Aqua-Hot® heated basement storage
 - (1) 1.6 AGM batteries (6V/390 amp hrs. ea.)
 - 3,000W pure sine wave inverter
 - 50 amp power cord on electric powered reel
 - Borgeson dual-zone HVAC system
 - (3) 15,000 BTU A/C units with heat pumps and condenser coils
 - (2) 4500 Systemic water and heating system with in-floor heat throughout and engine preheat
 - Dual roof-mounted heated tank dump system with power crane valve and manual backup
 - Water hose with electric reel
 - Dual roof-mounted Guard® Vision dual-pitched patio awnings with LED lights
 - (5) 500 power outlets (50 amp awning with LED lights)
 - Guard® Ultra power window awnings
 - Guard® Ultra power window awnings
 - Keyless entry with doorbell and keypad system for 43 in. Samsung® QLED 4K UHD Smart TV with tilt, swivel, and extend adjustment
 - (2) 1000W power inverters with USB port and receptacle
 - Chrome, heated, remote-control, side-view mirrors with blind-spot indicators
 - Standard LED interior lighting
 - Starlink satellite internet system
 - Wingo® TRAVLER satellite dish DIRECTV®-standard with USA option
 - (2) 1000W power inverters with USB port and receptacle
 - Wingo® WF-Ranger™ Wi-Fi extender
 - (2) power slideout basement storage for 28 cu. ft. exterior refrigerator/freezer on slideout
 - Push-button, power-unlatching baggage doors with LED indicator light

Optional Equipment

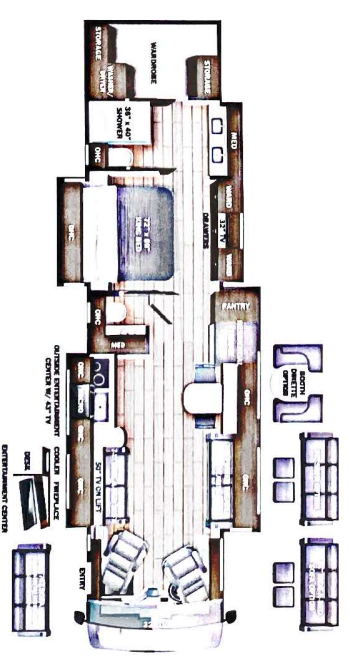
OPTIONAL EQUIPMENT INSTALLED ON THIS VEHICLE BY MANUFACTURER

- STANDARD INTERIOR EQUIPMENT**
- Valdor® 15 in. digital dash with quad core graphics processor, on-board diagnostics and ability to display traditional instrument cluster, 360° camera system or GPS navigation view system
 - System and sensor X scan 6 HD cameras displayed on digital dash screen
 - Valdor® infotainment system with 15 in. touchscreen, Sygic navigation, Bluetooth® Sync, XM and Pandora tuner, SiriusXM satellite radio, SiriusXM® satellite radio distribution and integrated Vegatouch coach control
 - 4.3 in. infotainment control touchscreen in passenger console
 - "LeatherBeam" adjustable power steering assist
 - Leather steering wheel with integrated controls for screen selection, instrument cluster navigation, media source selection, cruise, wipers and Bluetooth® phone functionality
 - JBL® premium audio 11-speaker sound system with amplifier, speakers and DVC subwoofer
 - All-terrain automotive antenna for AM/FM/Sinus/GPS dash
 - Ultra Vision® one-piece wrap-around tinted windshield
 - 32 in. Samsung® QLED 4K UHD Smart TV in front
 - Heater and cooled leather driver and passenger seats with powered 6-way adjustment, lumbar, recline, footrest and massage functions
 - Freely adjustable seat
 - Freely adjustable system with 10 in. Vegatouch touchscreen monitoring and control (mobile app available)
 - 3700W 3 in. 90° QLED 4K UHD Smart TV
 - Bose® sound bar with subwoofer and universal remote control
 - Sony® Blu-ray® player
 - Power sunroof, day and blackout night shades
 - Powered solar day and blackout night shades
 - Central vacuum system
 - Stainless steel residential refrigerator
 - 1.9 cu. ft. convection microwave oven
 - Fisher & Paykel dishwasher
 - 32 in. Samsung® QLED 4K UHD Smart TV
 - 32 in. Samsung® QLED 4K UHD Smart TV
 - Porcelain tile shower walls and floor with skylight and frameless glass shower door
 - Teakwood shower seat
 - Separate washer and dryer

Base price	926,990.00
LINEN	N/C
ALMOND CABINETRY	30.00
EXCLUDE LINEN FRONT	N/C
OVERHEAD ACCENT WOOD	N/C
PACOMA SHIELD PAINT	30.00
USA STANDARD	N/C
2x Sp 54000 320" X15 605	N/C
TAG AXLE	N/C
2021 EPA2021CARB BA09	N/C
DISHWASHER	N/C
12.4K GENERATOR	N/C
WINEGARAD TRAVLER	N/C
SATELLITE ANTENNA W/DISH NETWORK	113.00
AGM BATTERY	N/C
FREE STANDING TABLE WITH 4 CHAIRS	N/C
THEATER SEATING SOFA D/S	N/C
SOFA WITH TV LIFT	N/C
KING SLEEP NUMBER	N/C
MATTRESS	293.00
HEADBOARD/HARDWOOD	2,145.00
Add Special Paint	N/C

UNIT TOTAL **931,621.00**

DEALER INSTALLED OPTIONS



DIMENSIONS

Exterior height:.....152.00"
 Exterior width:.....101.00"

CAPACITIES

Fresh water tank (gals.):.....100.00
 Gray water tank (gals.):.....62.00
 Black water/coilet tank (gals.):.....41.00
 Propane (lbs.):.....0
 Propane (gals.):.....0
 Water heater (gals.):.....0.00

TIRES

Tire size (front):.....365/70R22.5
 Tire size (mid):.....315/80R22.5
 Tire size (rear):.....315/80R22.5

Some dimensions may be rounded and may vary from the actual dimensions
 Weights may be estimated calculations and may vary from the actual weights
 - refer to the vehicle weight labels for actual weights***
 Floorplans, features and specifications are subject to change without notice.